

KIMBERLY YOUTH ASSOCIATION SOCCER RULES 2022

GRADES K-1-2 (Ball size 3)

1. 7 players max on field at a time includes 1-goalie (Kinder recommendation is 5 players max)
2. Must have minimum of 4 players to play game or forfeit
3. Shin guards **MUST** be worn by all players at all times during practices AND games
4. When ball is kicked out over the sidelines the ball will be thrown in by other team. Ball must be thrown in with **BOTH** feet on the ground and thrown over head with two hands. If not done properly, 2nd attempt instructed by referee
5. Game is (4) 10-minute quarters, with a running clock. **ONE TIME OUT PER TEAM PER HALF**
6. No Off Side will be called
7. Drop ball on injury or foul or doggie pile situation (illegal use of hands, shoving, tripping, holding, etc.)
8. When the defending team kicks the ball out of bounds over their own goal line, the attacking team gets to take a corner kick
9. If the attacking team kicks the ball out of play over the goal line, the defending team gets a goal kick. The goalie kicks the ball upfield from the goal box
10. No yellow or red flags
11. No penalty kicks, no direct kicks
12. No head first slides, **NO** heading the ball, feet first slides allowed
13. Goal may be awarded on kick off
14. Subs are unlimited, can be made at dead ball whistles, time outs or if an injury occurs
15. Coach may be on the field at all times during play
16. **UNINTENTIONAL** hand balls are **NOT** a foul (to protect face/body, etc.)

GRADES 3-4 (Ball Size 4)

Same rules as K-2 with the following exceptions:

1. (4) 10-minute quarters
2. 9 players max per side including goalie EX (4 front - 4 backs) (3 fronts - 2 mids - 3 backs)
3. **WITH LIMITED ROSTER WE CAN PLAY 5 ON 5/6 ON 6** (there must be enough players to have subs)
4. Coaches must be on side lines
5. Foul or injury will be an indirect kick. Following an indirect kick the ball **MUST** touch another play (from either team) before scoring a goal

GRADES 5-6 (Ball size 5)

Same rules as K-4 with the following exceptions:

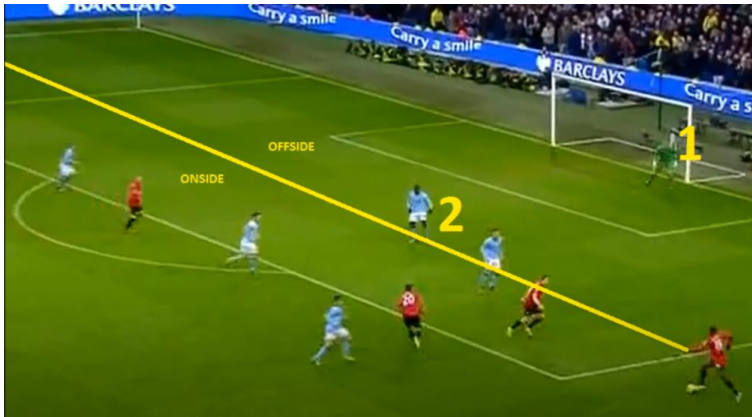
1. (4) 12-minute quarters
2. Off-side will be called

- * **SPORTSMANSHIP IS A MUST AND REQUIRED AT ALL TIMES, *REMEMBER THIS IS RECREATIONAL SPORTS***
- * **FOUL LANGUAGE IS NOT ACCEPTABLE OR TOLERATED**
- * **NO YELLING AT THE OFFICIALS FOR ANY REASON**
- * **EACH PLAYER IS EXPECTED TO PLAY HALF THE GAME, PLEASE MAKE SURE THIS HAPPENS**
- * **IF YOU HAVE ANY ISSUES PLEASE CONTACT ME AND I WILL TAKE CARE OF IT**

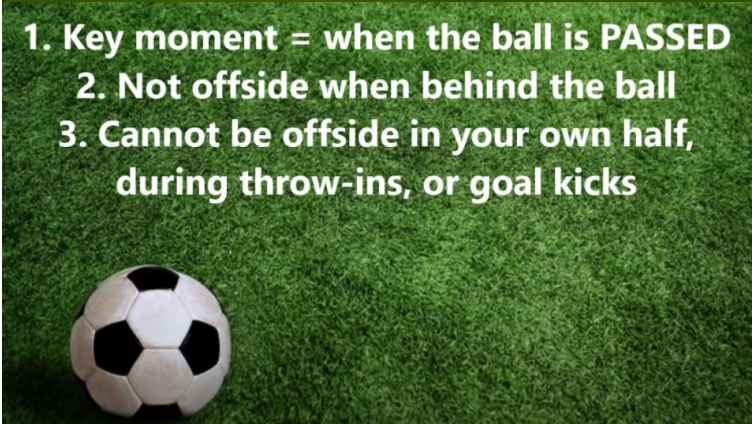
Lynda Moses 208-595-0057

OFF-SIDE EXPLAINED:

OFF-SIDE CAN BE CALLED WHEN YOU ARE AHEAD OF THE BALL AND IN FRONT OF THE 2ND DEFENDER (EXAMPLE BELOW SHOWS GOALIE IS 1ST DEFENDER)



- 1. Key moment = when the ball is PASSED**
- 2. Not offside when behind the ball**
- 3. Cannot be offside in your own half, during throw-ins, or goal kicks**



**Pass cannot be made from your own teammate if you are ahead of the defender
It is not off-side during a corner throw-in or corner kick
It is not off-side if the person receiving the pass was behind the ball**